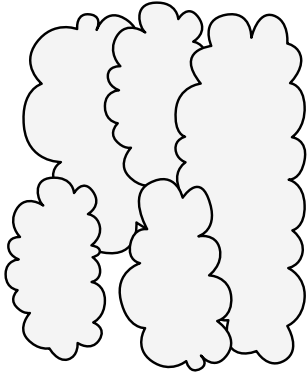


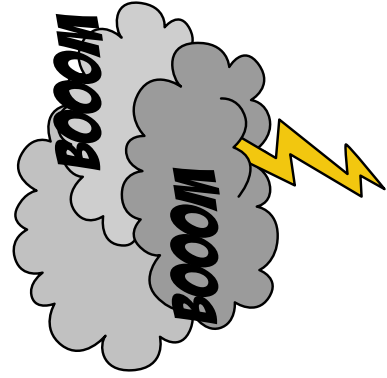
Weather & Climate Cards

Cloudy



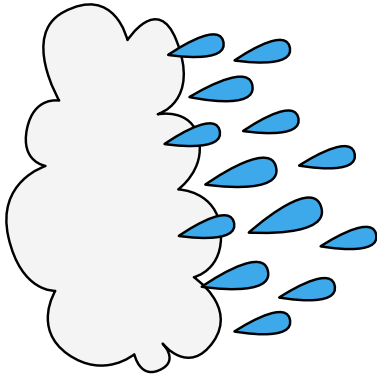
Cloudy

Thunder



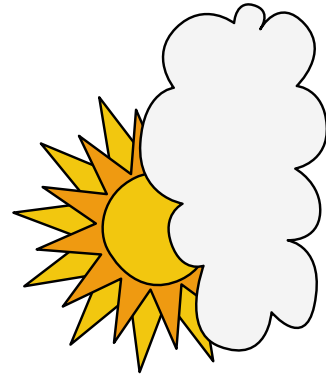
Thunder

Rainy



Rainy

Partial Sun



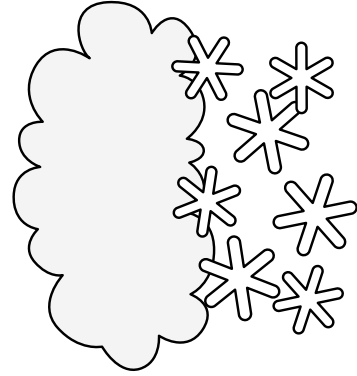
Partial Sun

Windy



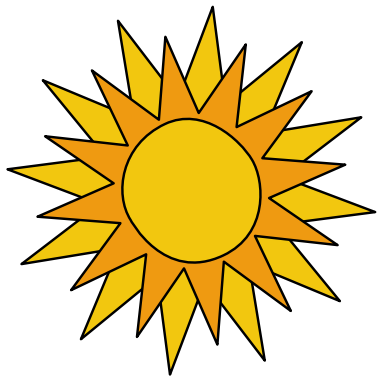
Windy

Snow



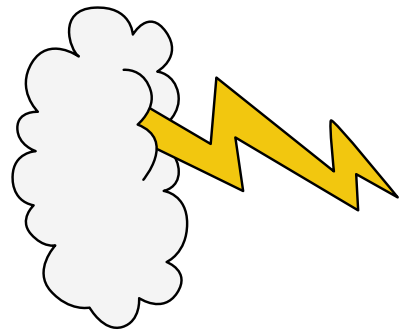
Snow

Sunny



Sunny

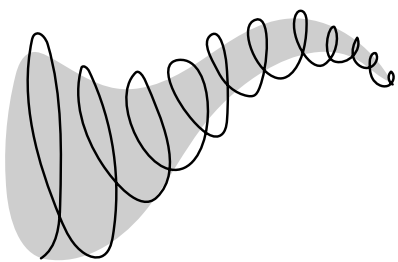
Lightning



Lightning

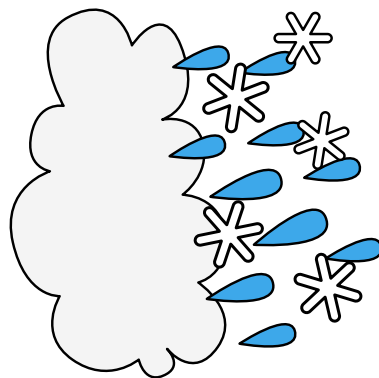
Weather & Climate Cards

Tornado



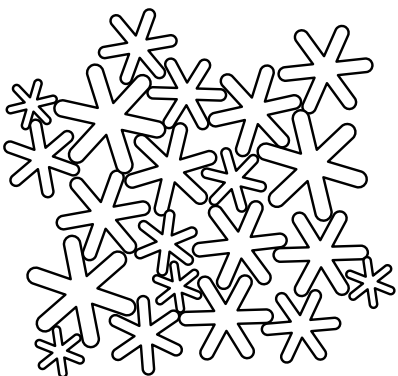
Tornado

Sleet



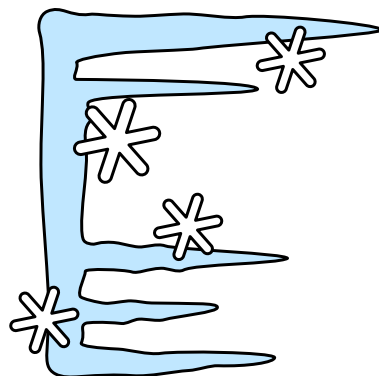
Sleet

Frost



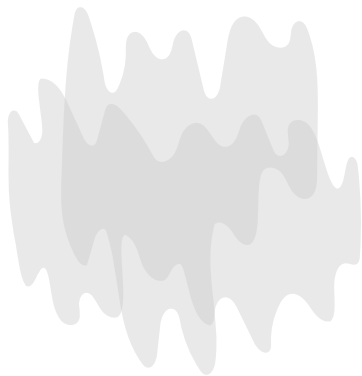
Frost

Ice



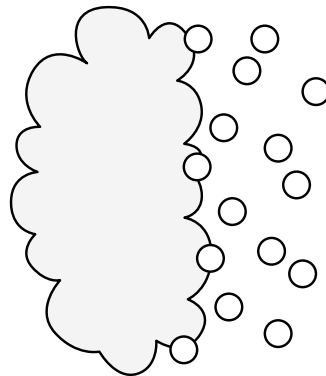
Ice

Fog



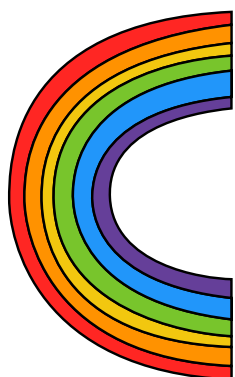
Fog

Hail



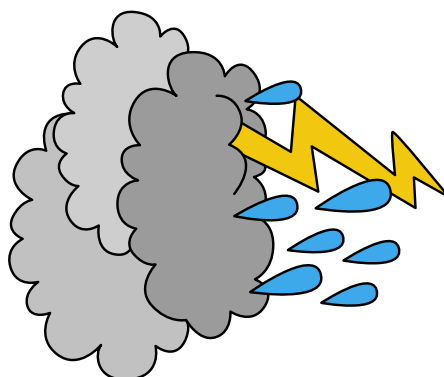
Hail

Rainbow



Rainbow

Stormy



Stormy

Weather & Climate Cards

Tropical

Warm all year with no winter.
Found near the Equator.

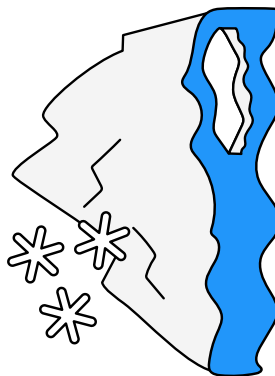


Warm all year with no winter.
Found near the Equator.

Tropical

Polar

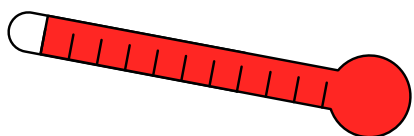
Very cold. Snow and ice often
cover the land.



Very cold. Snow and ice often
cover the land.

Polar

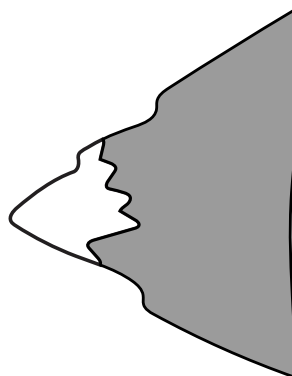
Hot



Hot

Highland

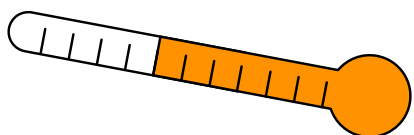
Great temperature range
between day and night.



Great temperature range
between day and night.

Highland

Warm



Warm

Temperate

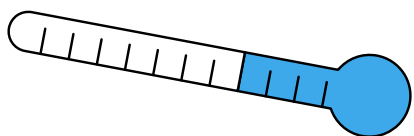
Mostly north of the Equator.
Warm summers and cold winters.



Mostly north of the Equator.
Warm summers and cold winters.

Temperate

Cold



Cold

Subtropical

North and south of tropical
climates. Can be humid or dry.



North and south of tropical
climates. Can be humid or dry.

Subtropical