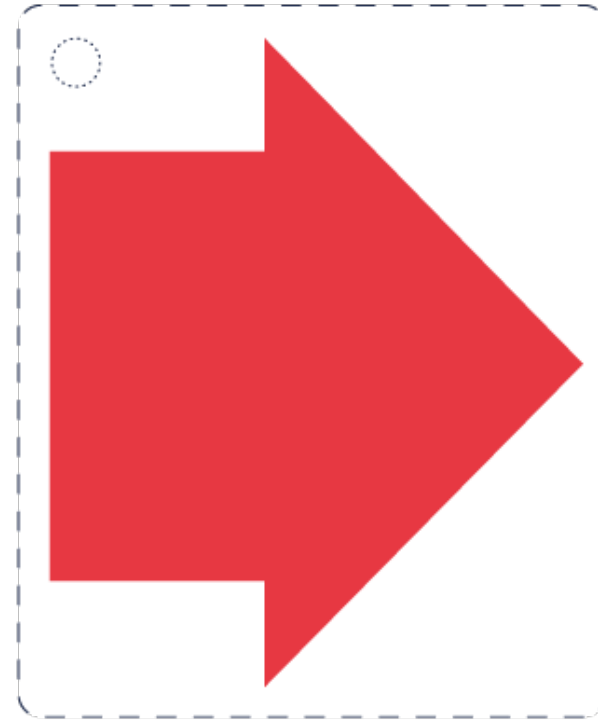
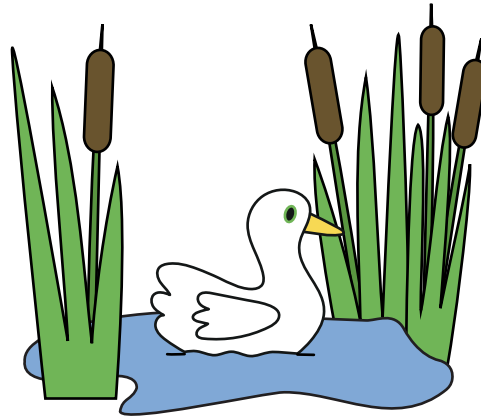
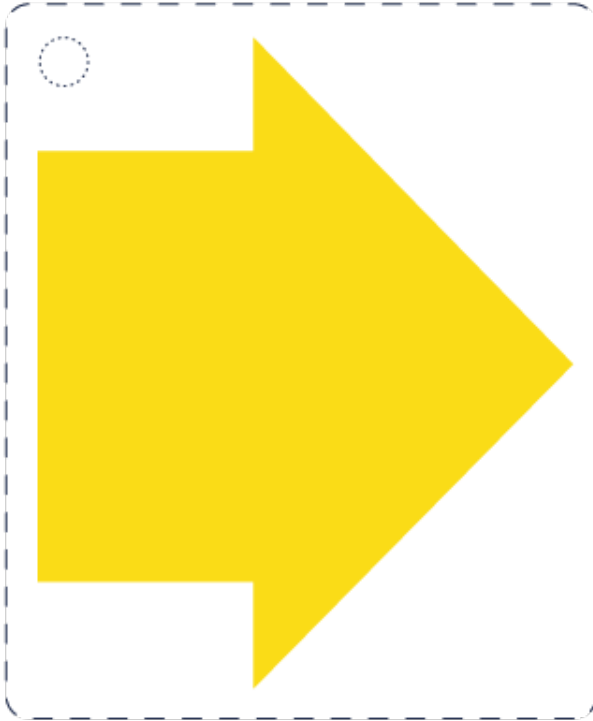
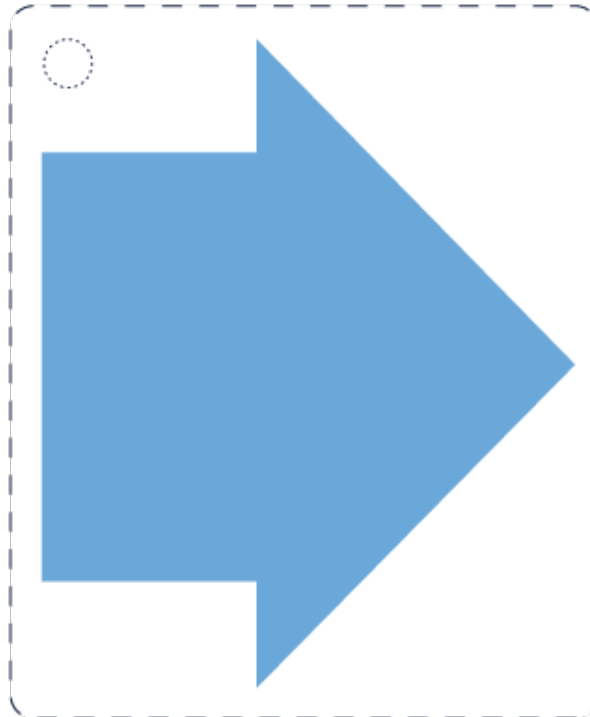
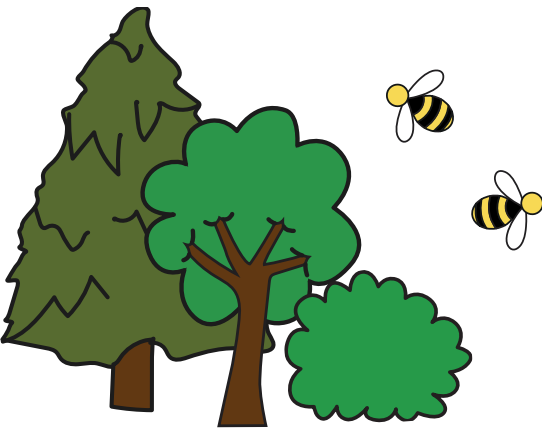
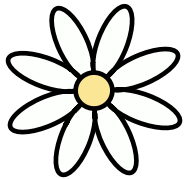
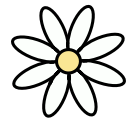


Countryside Code Signs and Symbols

Cut out each symbol card and play a memory game with the cards or attach them to your backpack to remind yourself of the Countryside Code whilst out and about. Why not write what each one means on the back of each card?



Scan here to
check out the
Countryside Code!



Here's an Idea!

Hole punch your cards where the dotted circle is and clip them together on a hook (that you can attach to your backpack) so that you always have them to hand on your adventures!



Countryside Code Signs and Symbols - Page 2

Print this page out too for the rest of the Countryside Code Signs and Symbols! Always follow advice on local signs, as some landowners voluntarily provide access to permissive paths and choose who can use them.



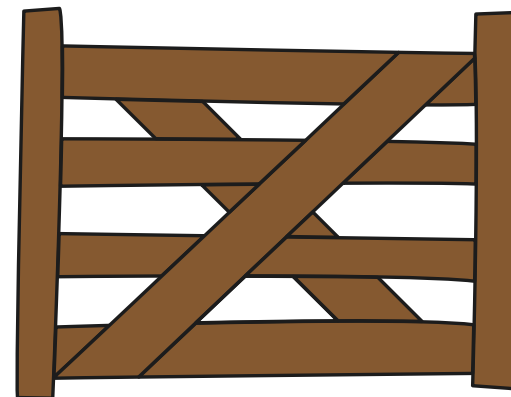
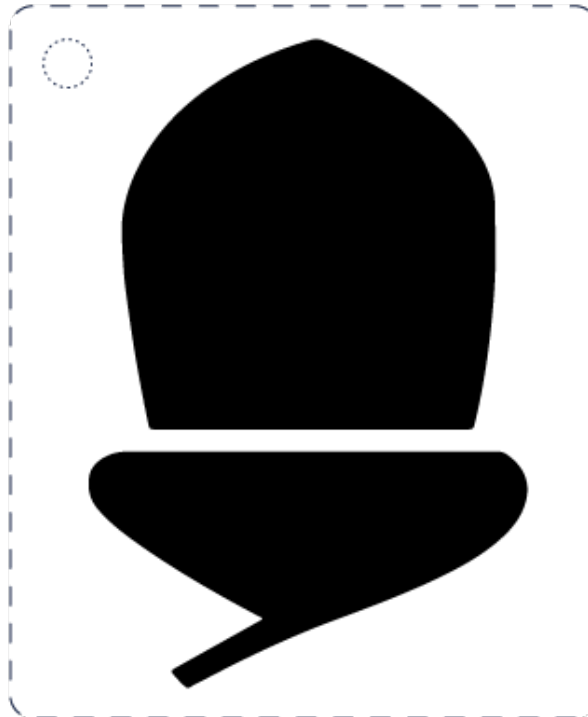
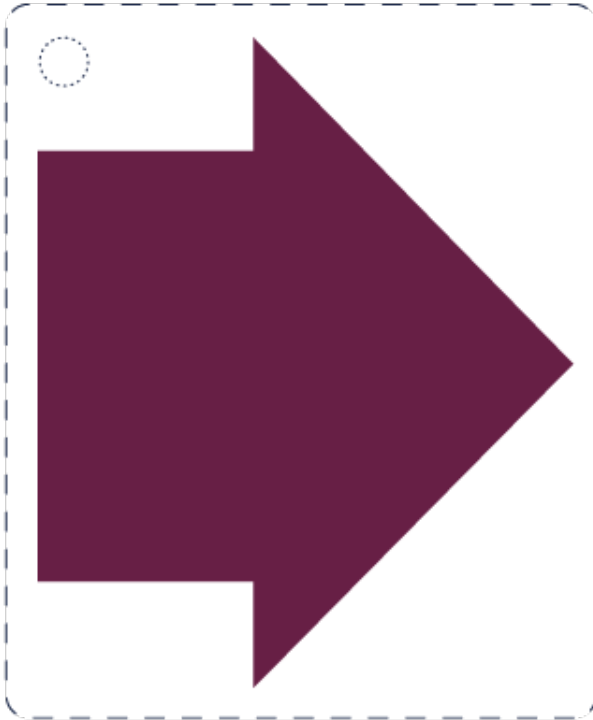
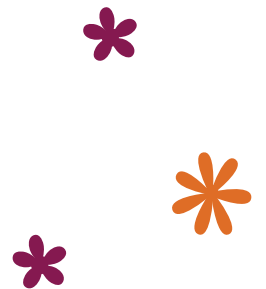
Laminate
your cards to
protect them
from wet and
windy weather!



RESPECT

PROTECT

ENJOY

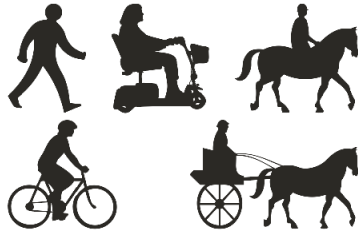


Countryside Code Signs and Symbols - Page 3

Can't remember what each arrow means? Print and cut out the statements below. Match them up to each symbol card (check your answers using the QR code on the right) then stick them onto the back of your cards!



Restricted Byway



Bridleway



Scan here to view
the Countryside
Code and check
your answers!



Byway open to all traffic



Footpath



Open Access

You can walk and explore
away from paths.

www.openaccess.naturalengland.org.uk

National Trail

National Trails are
created for walking, with
horse-riding and cycling
possible on some trails or
trail sections.

www.nationaltrail.co.uk

Once you know
which statement
matches up to which
arrow, draw the
arrow in the blank
space here under
the green title!

